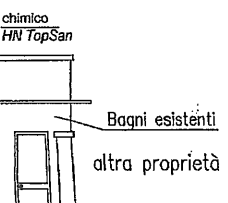
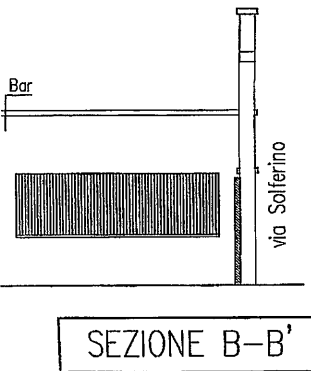
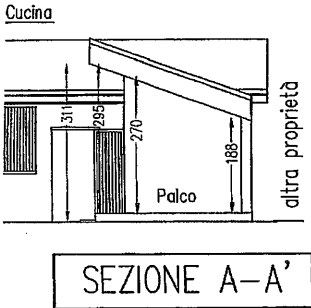
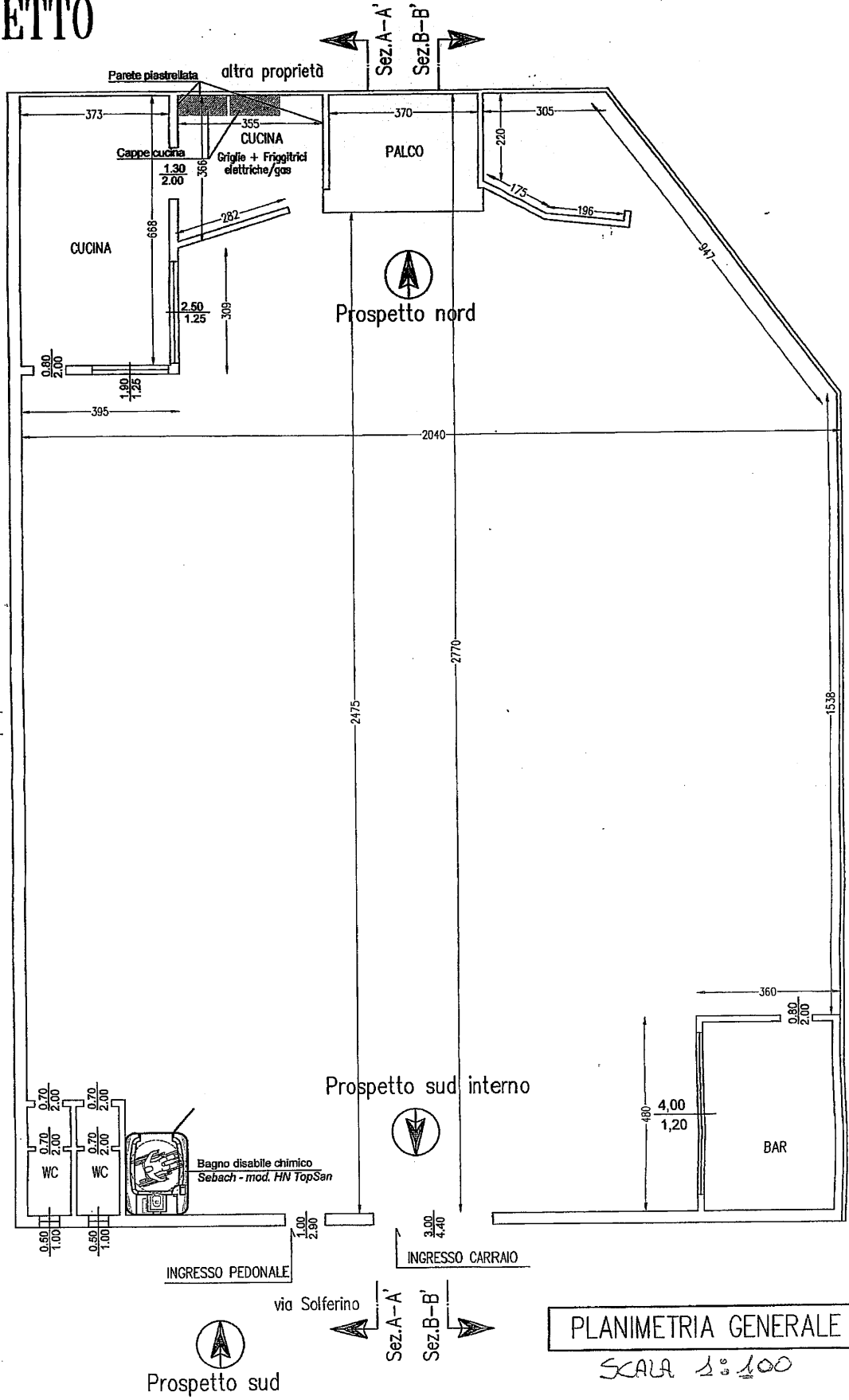


# PROGETTO



COMUNE DI GLEVANZANO  
18 MAR 2011  
data di arrivo al protocollo

DEGLI INGEGNERI DELLA PROVINCIA DI...  
DOTT. INGEGNERE  
FRANCESCA PIZZOCCHERO  
SECTORE A CIVILE ED AMBIENTALE

